

ADDOR
aspire-II

Site : Addor Aspire-II, Nr. Jahanvee Restaurant,
University to Panjrapole Road, Ahmedabad 380 015. INDIA.

Architect : ADS Architect Pvt. Ltd.

Structure Engineer : Setu Consultant

Rera : PR/GJ/AHMEDABAD/AHMEDABADCITY/AUDA/CAA06539/311219
www.gujrera.gujrat.gov.in

ADDOR
the address of reliability

Addis Realtech LLP.

32, 3rd Floor, Roopa Building, Sona Roopa,
Opp. Lal Bungalow, C.G.Road, Ahmedabad-380009.
www.addorgroup.com | sales@addorgroup.com
Tele. +91 79 2644 0990
For Booking Call: 8000 44 44 11, +91 79 48922551

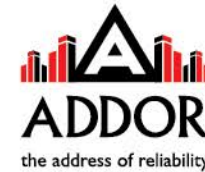
ibmm.com/in



ONLY THE BEST

make a comeback!

GREETINGS FROM THE ADDOR GROUP. "Creating others' world is our working tradition" At Addor, building, creating and influencing the lifestyle of the people is forever running in our minds and we have upheld the tradition of keeping this going.



Aspire 2 is here!

After the stupendous success and number of happy experiencers of Aspire, we are presenting these magnificent spaces for the second time!

Aspire 2, the ones aspiring a lavish space, seep your customers into artistic opulence and new age amenities. At the brim of city life and modern architecture, we offer luxurious spaces for your business to boom!

Walk in to Aspire 2 to experience the buzzing, and artful work places crafted specially for your business!





Design Concept of TWIN TOWERS

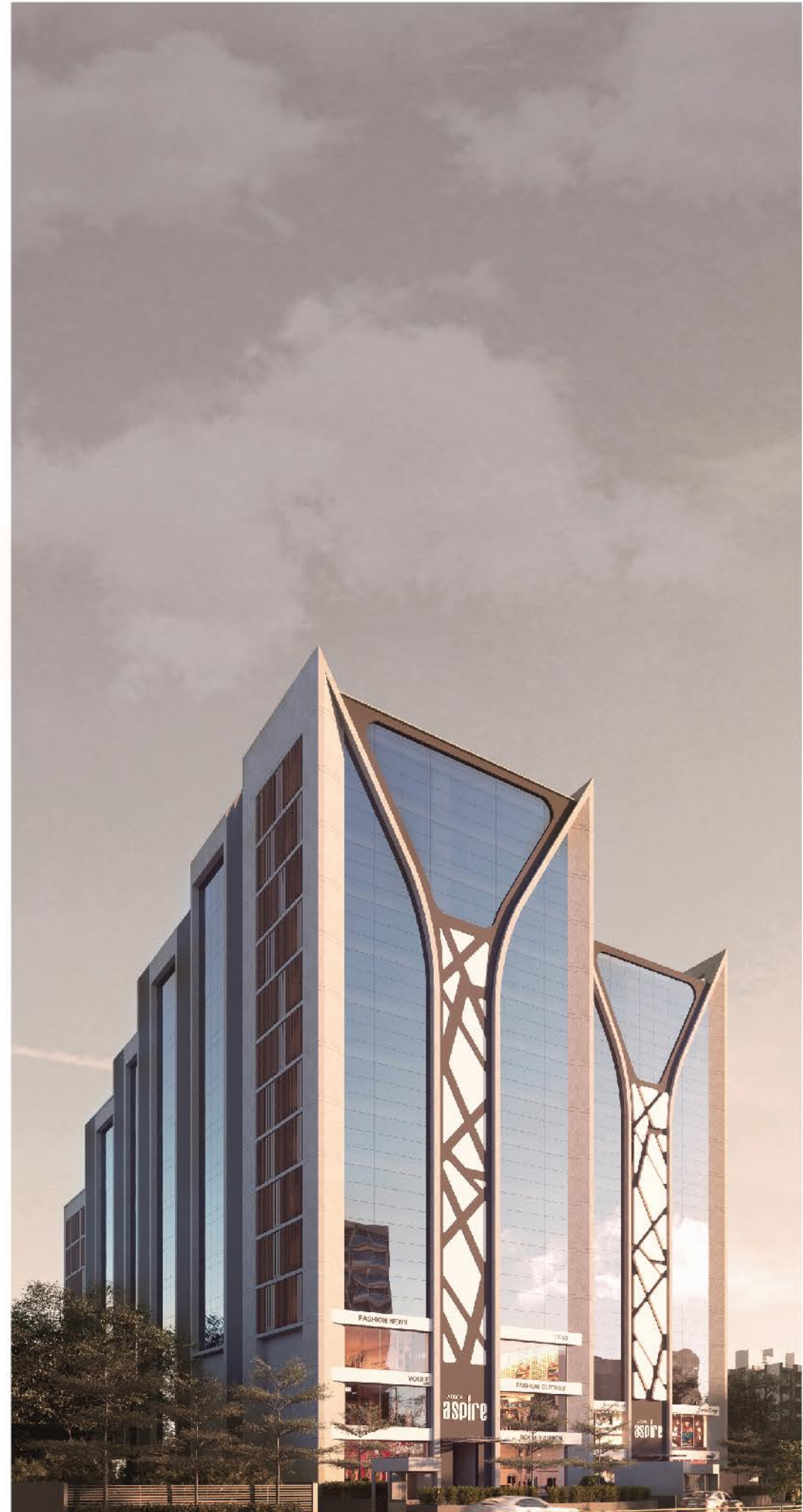
Twinning in Sky

The twin towers, scraping the sky with elegance are a sight to behold. A strategically located business and pleasure destination, Aspire-2 is nestled within the heartbeat of the city.

The towers will be the talking point of the town and the desired destination for all.

Walk into these intricately designed towers and admire the architectural marvel it is whilst shopping or working.

ADDOR
aspire-11





Behold the fusion of
Old excellence with new innovation!



9th-13th Floor Offices with

TERRACE

It's newer, better and oh-so-luxurious!

Aspire is here again with better amenities, superior technology, modern design and luxurious infrastructure.

After the overwhelming response and delighted clients of Aspire we are launching Aspire-2...

Aspire 2 is thoughtfully designed keeping convenience at forefront for all our patrons. High ceilings, spacious terraces, equal measures of open spaces and artful establishments make Aspire 2 your aspiration of today!

ADDOR
aspire-11



1st - 2nd Floor Dedicated

ELEVATOR

For Shopper Experience

5 Elevators for corporate offices
Including 1 service lift.

Aspire 2 offers a heady mix of fashion, accessories, sports, jewellery, food court, cinema and other entertainment brands all under one roof.

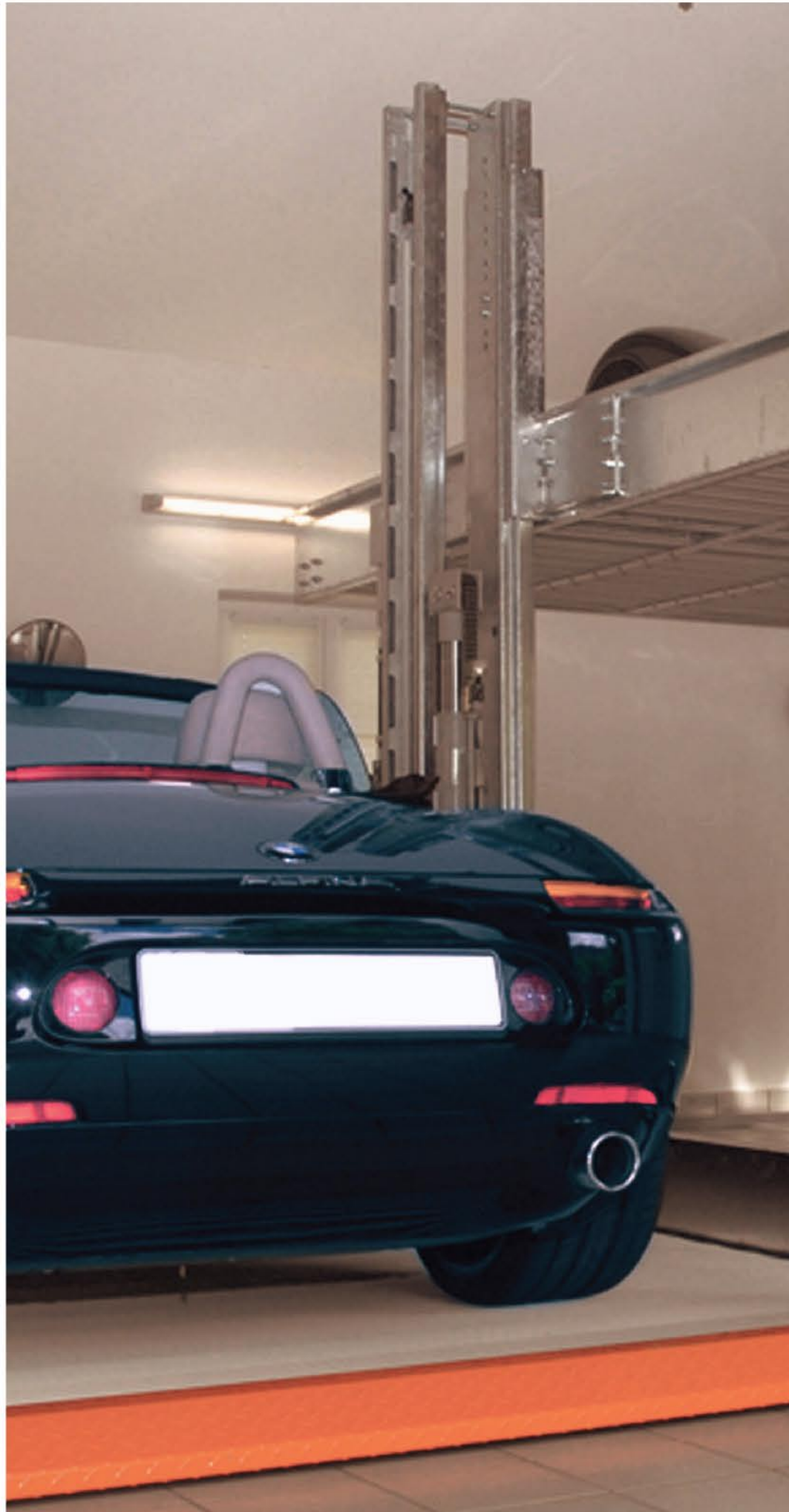
There is 1 exclusive lift for shoppers and 5 lifts dedicated to corporates with one service lift making Aspire 2 a place where business and pleasure are equally accessible. So if you are scouting for a retail space that will attract serious footfalls or on the lookout for a plush office space, look no further.

ADDOR
aspire·II

The Aspire family is ever linked in comfort, design and excellence. The linked foyer will make the proximity to Aspire 2 more easy and exciting. Designed with the idea of making luxury accessible to our patrons across, this junction is a class-apart unique addition to Aspire-2.

Conceptual **FOYER** Linking Buildings via Foyers





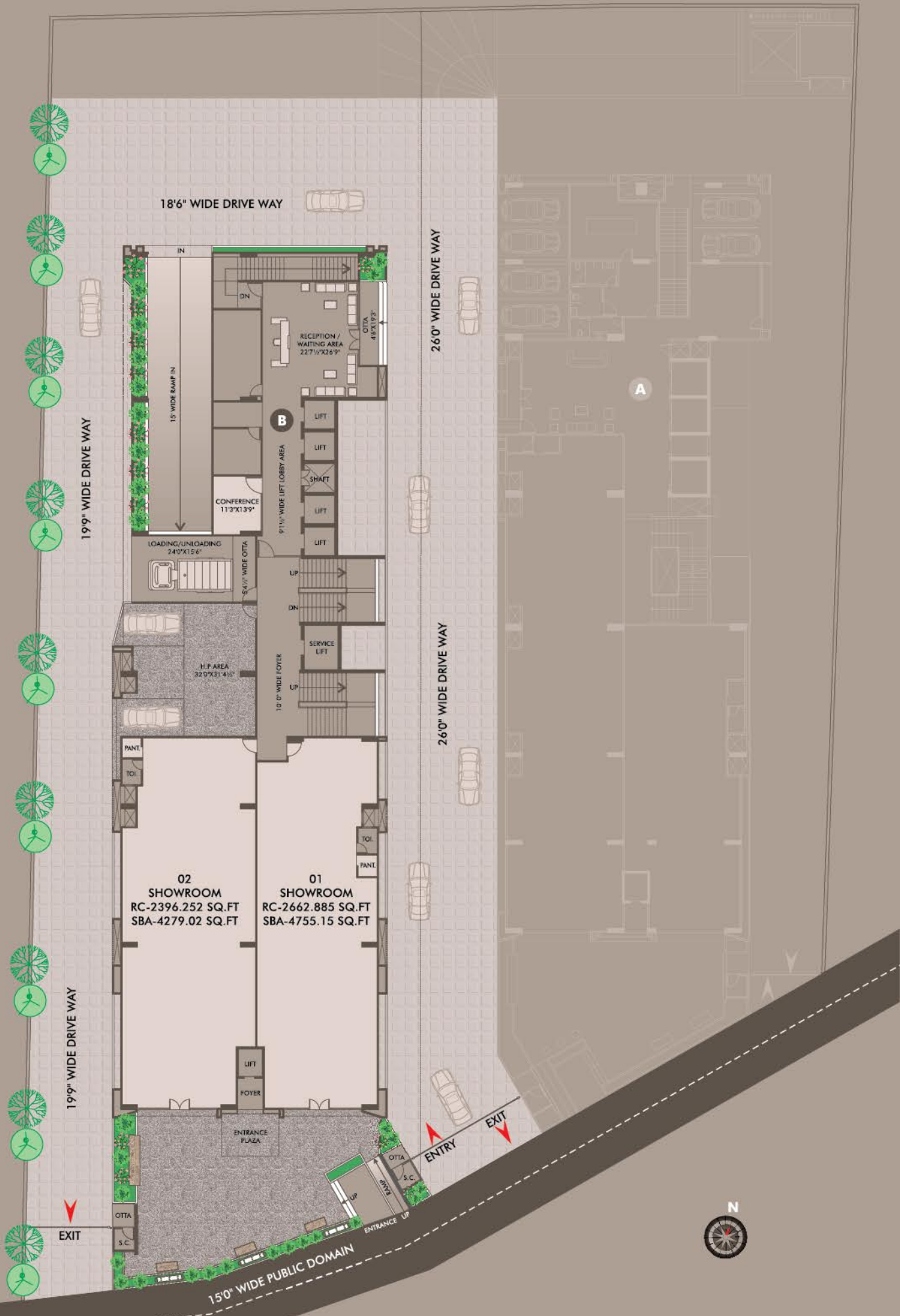
When the world hunts for
CAR PARKING
Park your beast in style at Aspire 2

As much we care for you we care for your possessions by offering spacious parking spaces for your vehicle.

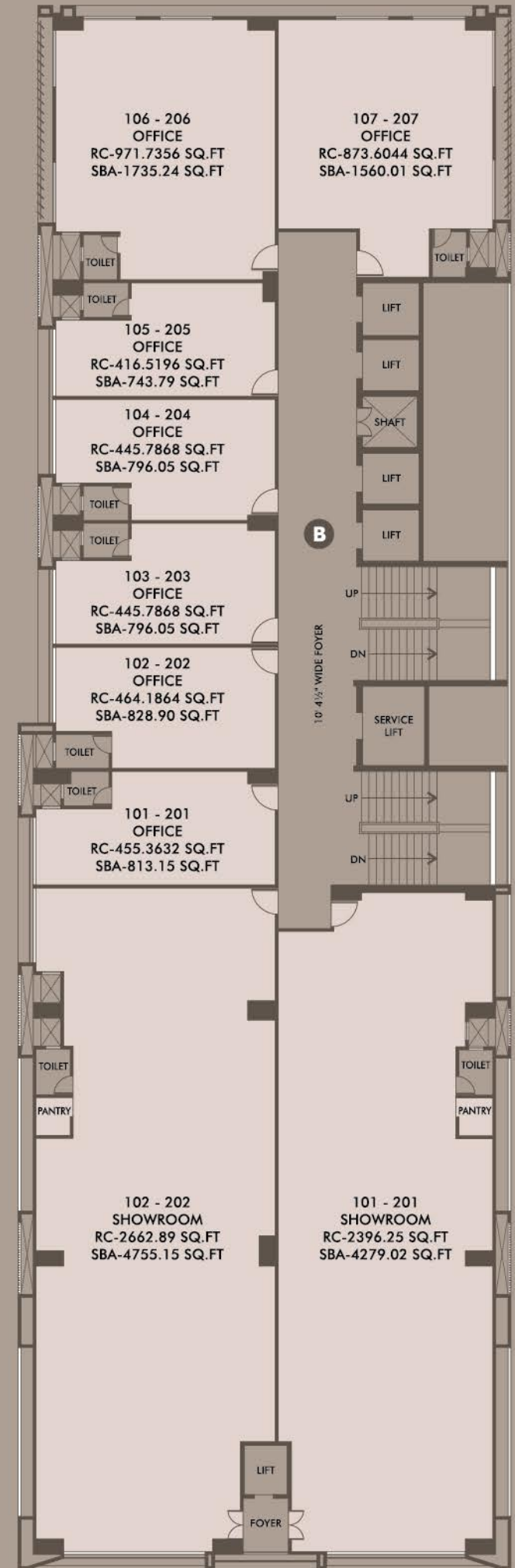
A place where your parking troubles are parked away!

ADDOR
aspire-11

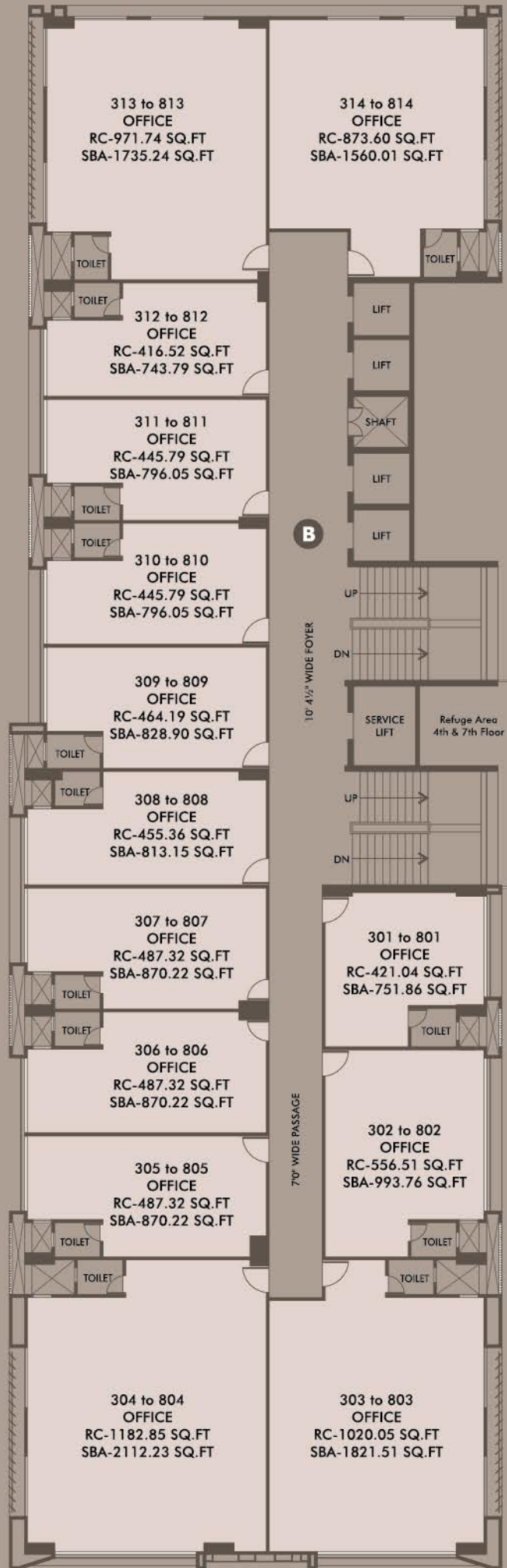
GROUND FLOOR



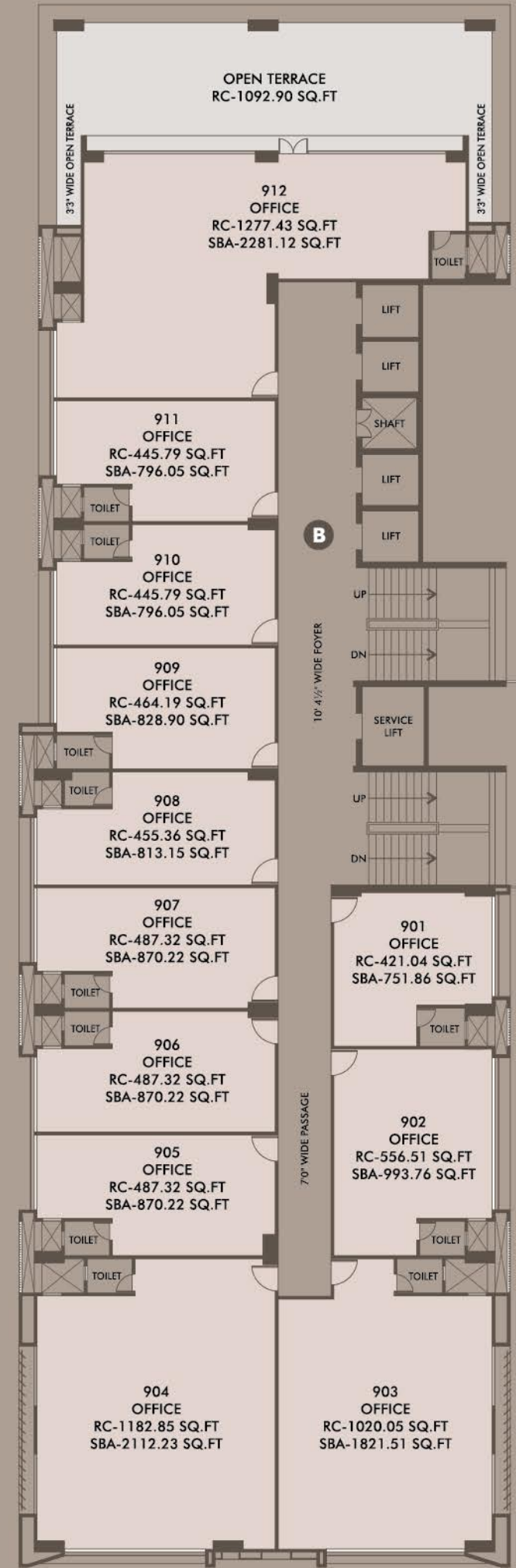
1ST & 2ND FLOOR



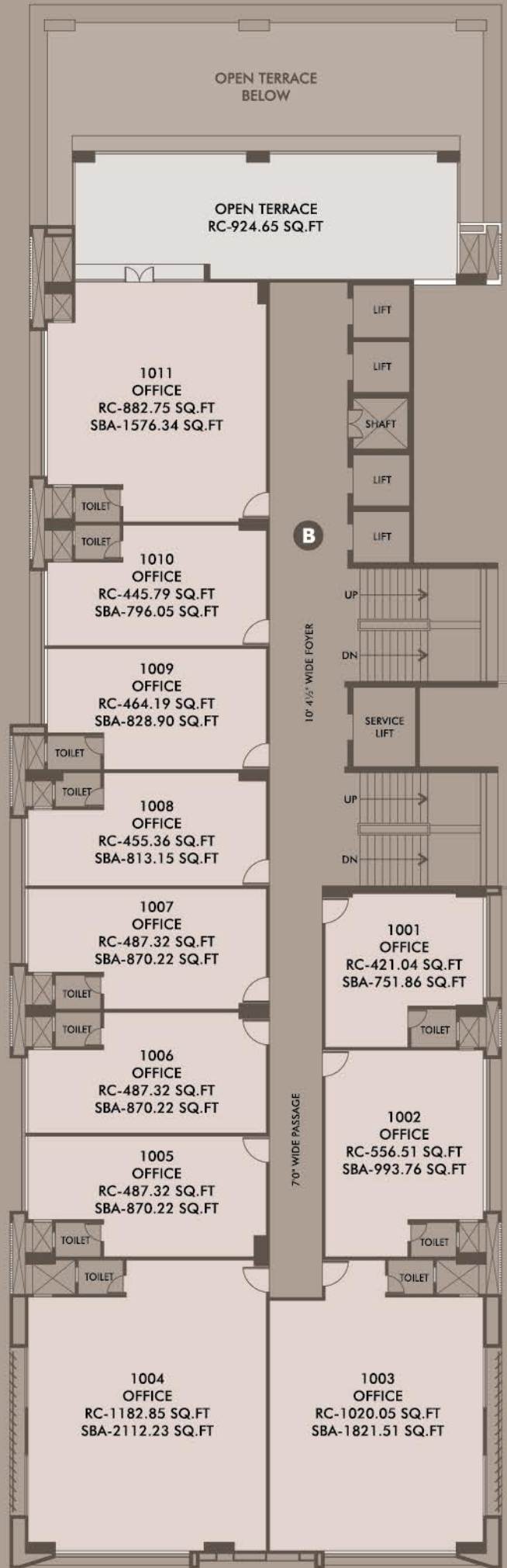
TYPICAL FLOOR
(3rd to 8th Floor)



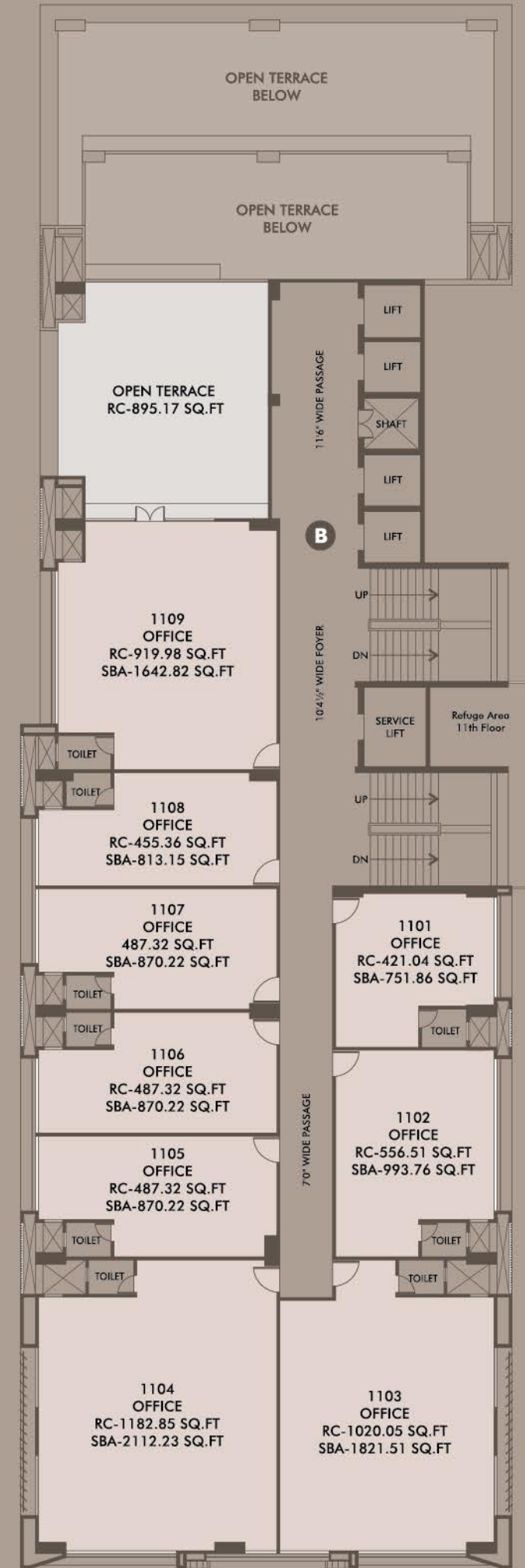
9TH FLOOR



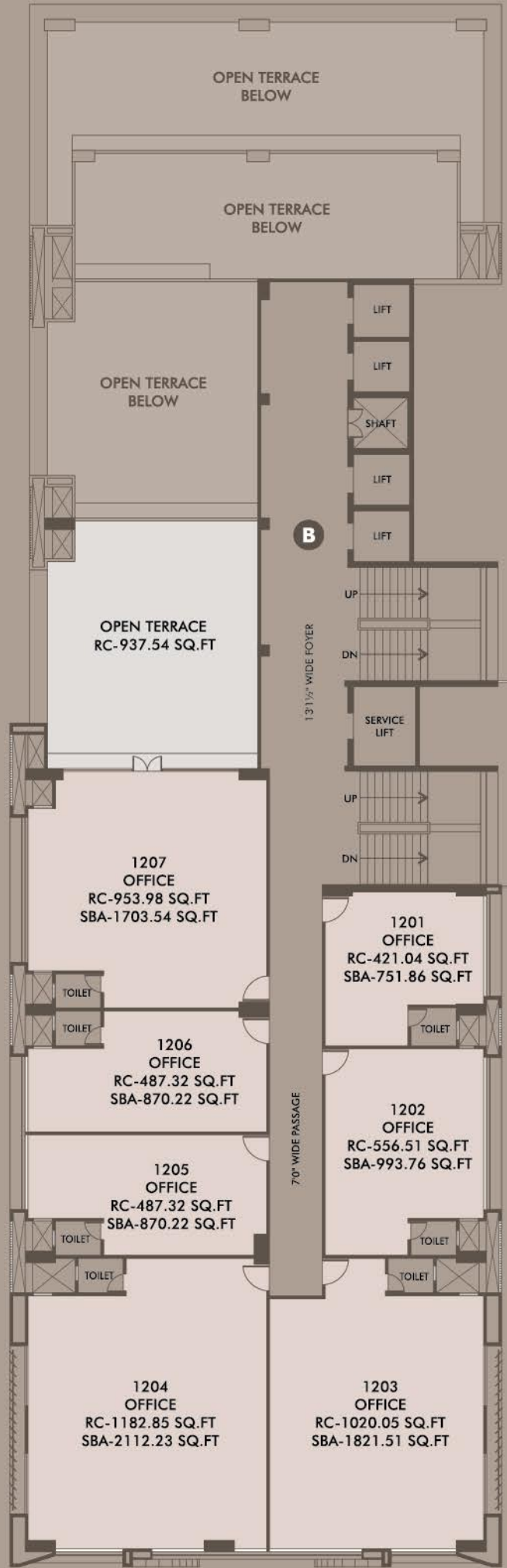
10TH FLOOR



11TH FLOOR



12TH FLOOR



13TH FLOOR



Business Require
A Specific
LOCATION



Unmatched amenities, located in the heart of the city make Aspire 2 an enviable and aspirational commercial complex. Aspire 2 is a location that makes businesses and pleasure equally accessible. So if you are scouting for a retail space that will attract serious footfalls or on the lookout for a plush office space, look no further.

Improved and reinvented Aspire 2 is a unique concept offering the perfect blend of luxurious office spaces and retail outlets making it one of the most sought-after commercial addresses in town.

ADDOR
aspire-ii



Specifications

A brilliant combination of space, Location & amenities
Addor Aspire will set new standards in style.

- Conference Room for Members
- CCTV - All Common Areas Covered
- Impressive Foyer
- 12'4" ft. height on ground floor (Slab to Slab)
- IGBC Green rating Project
- Two Double Level basements with stackable parking
- 11'7" ft. height on 1st & 2nd floor (Slab to Slab)

Notes

- "All the details master plan & floor plans are tentative in nature. This brochure is just for better understanding the project & not for commercial circulation".
- Developer reserves the rights to make necessary changes without any prior notice.
- Such changes would be binding all the members.
- All the purchasers/legal possession holders shall abide by such changes.
- Changes/alterations of any nature by any member/purchaser/buyer/ legal possession holder will not be permitted.
- All the dimensions are approximate & unfurnished. Subject to Ahmedabad jurisdiction only.

ADDOR
aspire-II

Delivering Excellence Through OUR PROJECT

With every brick we lay, we establish our foundation as an inventive, revolutionary and visionary developed in the industry. Our projects touch the high skies and have built our reputation as a formidable real-estate developer in the country.

Every building we construct is a testament to our design excellence, innovative practices and consumer centric structures. We offer luxurious experiences to our millions of satisfied patrons.

Commercial & Industrial land

Addor ambition -@ Navrangpura
Addor aspire -@University Panjrapole Road
Pioneer -@Gandhinagar

Residential

14crowns-@ University Road
cloud 9-@ Nehrunagar Shivranjani Road
Shillon green-@ Dehgam
Hyde park-@ Goraj Village, Sanand
Swayam-@ Sanand
Edens -@ Goraj Village, Sanand



Addor strongly believes in constructing eco-friendly homes to ensure a sustainable living. The project is strategically designed in such a way that it ensures conservation of natural resources to the maximum.



Rainwater Harvesting

Rapidly depleting ground water levels led us to take up this step towards conserving water. The rain water that runs off during the monsoons will be redirected back to river saving it for future generation.



Electricity Conservation

At Addor, we address energy efficiency as one of the top priorities. Built with energy efficient modern technology, conserving electricity through efficient lighting and building automation has never been so easier.



Oxygen Rich Environment

Intricately planned well placed greenery can not only brighten the surroundings but also purify the air. At Addor, we have thoughtfully selected some of the best plants like Areca Palm, Neem, Snake Palm, Tulsi, Gerbera etc. that give away oxygen even during the night-time thereby offering oxygen rich environment to the dwellers.

